

Light a **M**atch **M**eeet a **F**amily

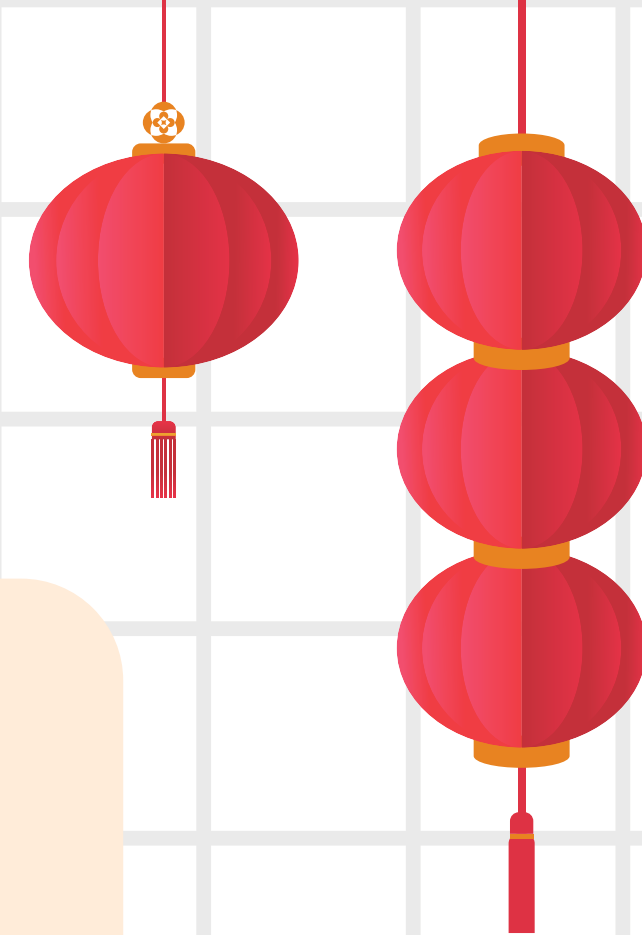
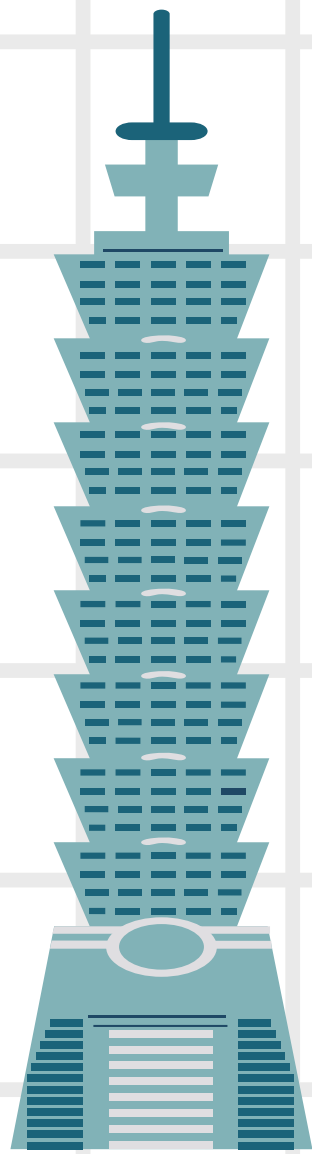
What is **LMMF** : Overseas Students



What is a **Host Family**?

A family-based arrangement that welcomes international students to communicate with their family members in an event or in a short-term period.

A great way to make new friends and experience Taiwanese culture & lifestyle of local families.



Taiwan Host Family **vs.** Overseas Homestay Family

	Host Family(Taiwan)	Homestay Family(Abroad)
Main Purpose	Culture exchange	Residential care services
Hosting Type	Holiday visits	Homestay
Hosting Period	Single day/2-5 days/1-2 weeks	At least 1-3 months
Flexibility	Able to accommodate students from different cities	Unable to accommodate students in different cities

What are the benefits of joining the LMMF program?



Experience local culture



Close like a Family



Make new friends



**Adapt to the life
in Taiwan**



Language learning

Host Family Members

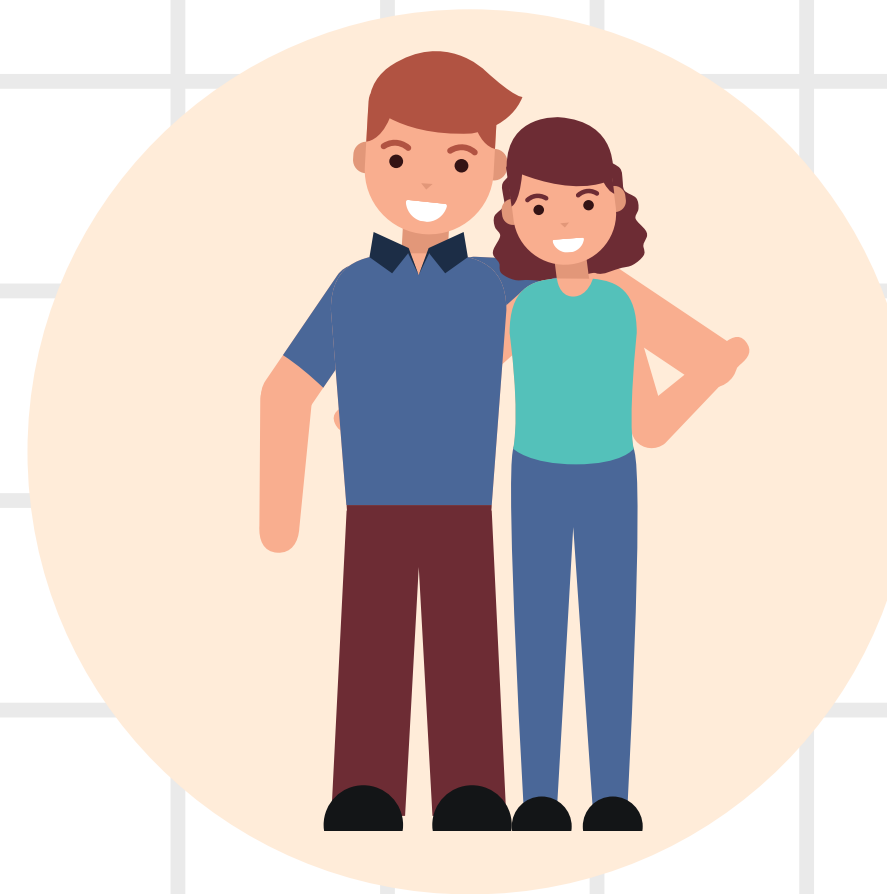
1. Families with children

2. Families with children away from home for school or work

3. Families with no kids

4. Single-parent families

5. Families with adult children



Hosting Types

Single day

2-5 days

1-2 weeks



Fun things to do together...

- Cuisine exchange
- Outdoor activity
- Attraction guide
- Baking
- Ball games activities
- Camping, Hiking
- etc.



Who can apply?

Overseas students of higher education institutes in Taiwan with a student ID card are eligible to apply.

Short-term study, exchange, visiting and Chinese language center students are included.

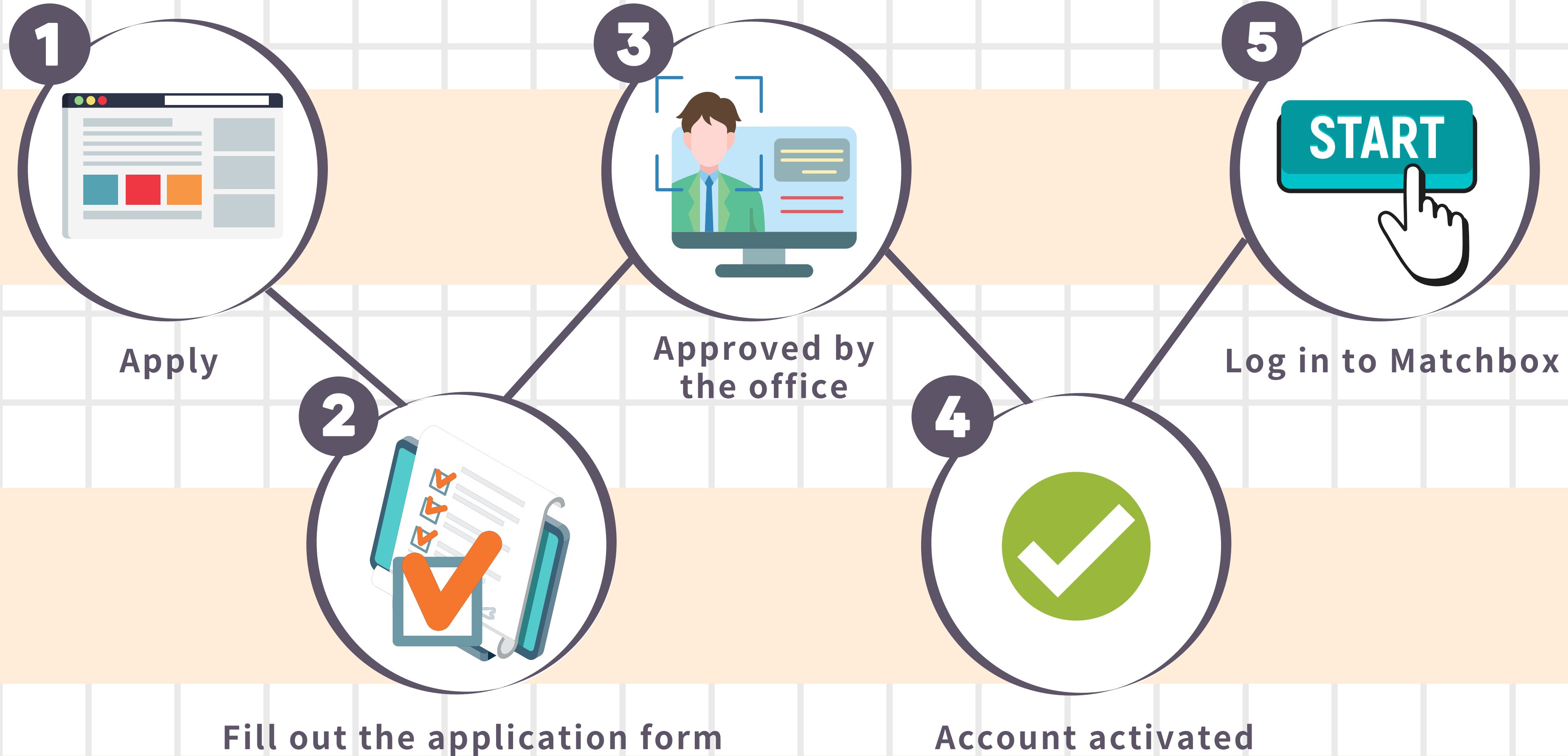


What is **Matchbox**?

1. The nickname of **the LMMF Host Family program**.
2. A three-way channel for **families, students, and education institutes** to initiate events and make matches.
3. You can initiate events, or sign up for the family events.



Account Application



How to **initiate** an event?



1
Initiate an event
on Matchbox
(**14 days** prior to the event)



2
Event posted



3
Select the family



4
Contact the host family
3 days prior to the event



5
Give feedback within
7 days after the event

How to **participate in events**?



Sign up for
host family events



Wait for matches



Initiate contact



Attend the event

Feedback

We value your experience

- ✔ Provide feedback within **7 days** after the event.
- ✔ If there are any other concerns, please call the host family hotline : 04-24517250 ext.2486
- ✔ Office hours : 9 am - 12 pm, 2pm - 5pm, Monday to Friday

